

Company Profile

SIT GmbH & Co. KG is a Bremen-based company that since 1987 has been active in switchgear and controlgear production worldwide with great success (on 03.02. 2015 was from the Schwaneweder Industrietechnik GmbH the SIT GmbH & Co. KG). We are a medium-sized enterprise with flexible working hours and are consequently able to deliver on short notice.

We produce energy distribution and control cabinets in all sizes. The field of energy distribution comprises large central control panels with a rated current of up to 6,300 A as well as installation distributions below 63 A. The application area ranges from the shipbuilding and the automobile industry to sewage plants and domestic technique.

We offer professional know-how in mixing technology and process engineering for the medical and cosmetic industry, in elevator construction and water technology. Our company carries out the complete development and commissioning of these automation systems (including software).

We developed, for example, the control system for the largest elevator in the world, which can be seen in the Bertelsmann Pavilion on the site of the EXPO in Hannover. Our shipbuilding projects include the four cablecasters of the shipyard Volkswerft Stralsund. For these new boats we delivered the central control panel (6300 A), the emergency control panel as well as the power and light distributors. We developed and produced these systems, and the acceptance test was carried out by Lloyd's Register.

Our Company:



Establishment of the company:
August 1987 in Schwanewede
Schwaneweder Industrietechnik GmbH

Relocation of business:
December 1997 to Bremen, Industrial Park Farge-
Ost construction of a new assembly hangar with
adjoining office accommodation

Change of company name:
03.02.2015 SIT GmbH & Co. KG

Complementary:
SIT Verwaltungsgesellschaft mbH

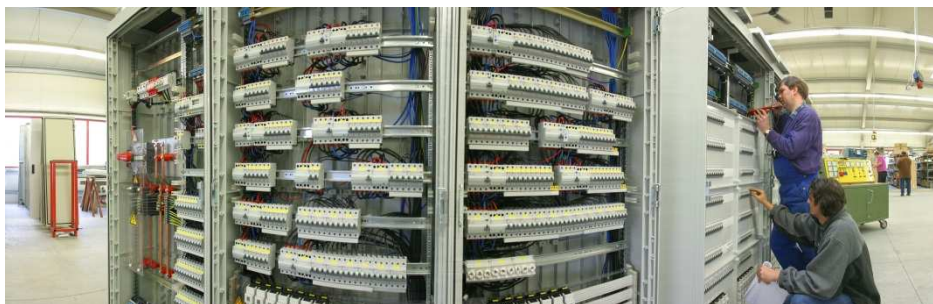
Director:
Graduate engineer Thomas Gröne

Our Production Plant:

Size : approx. 1,000 sqm
Staff : approx. 10 employees
Sales Volume : approx. 3-4 mill. € per annum

Examples from our Product Range:

Batch production of control systems for winch or steering gear in any desired form



Installation distributions for all requirements, e.g. for hospitals, office buildings, shopping centers etc.



Batch production of valve control systems for the shipbuilding industry



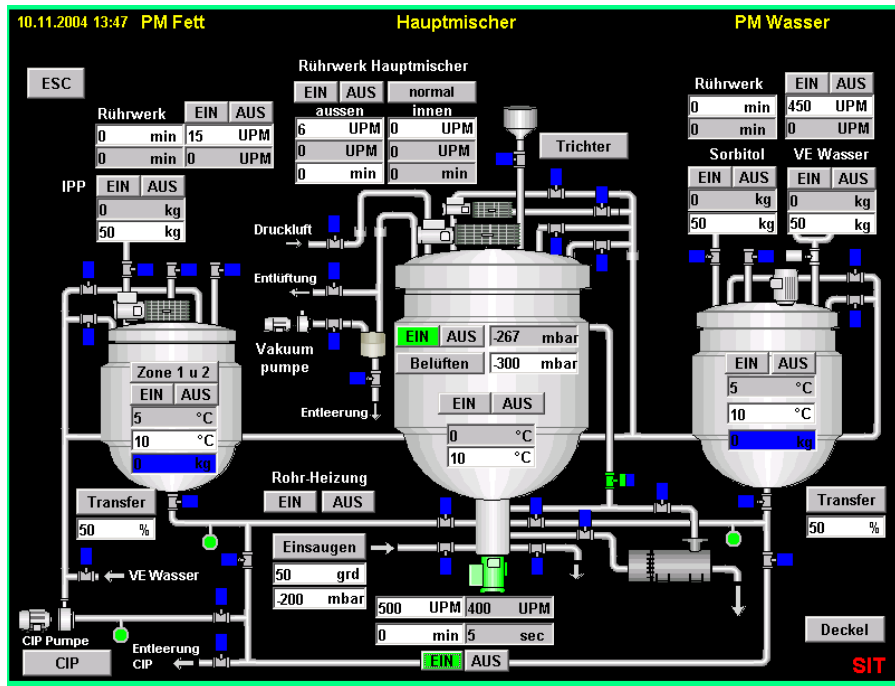
Control panel for the shipbuilding industry



1,5 MW Converter for wind power plant (Vensys 70/77)



Controlgear for mixing units, software and hardware



Visualisation of a mixing plant

As a new product line in our production programm we maintain the manufacturing of Bridge and ECR desks for passenger, container and gastanker vessels. The desks have been planed and constructed by our company. Since 2007 we are working successfully on this sector and have been able to proof our know-how on this matter by several deliveries.



We offer

- competence
- on-time delivery performance
- quality
- service

Our references

- ABB Automation Systems GmbH
- Siemens AG
- Schneider Electric Energy GmbH
- Hatlapa Uetersener Maschinenfabrik GmbH & Co.
- Sander Fertigung GmbH
- InPro electric GmbH
- Symex GmbH & Co.KG
- Rud. Prey GmbH
- Colep Laupheim GmbH & Co. KG
- Schwarzkopf & Henkel Production Europe GmbH & Co. KG
- Mann & Schröder GmbH
- VENSYS Energy AG
- Neue Apparate- und Behältertechnik GmbH
- Meyer Werft GmbH
- Fr. Lürssen Werft GmbH & Co.KG

How to find us:From a southward direction:

Bundesautobahn (amerik.: Highway, britisch: Motorway) A 27 Bremen towards Cuxhaven, exit Bremen Burglesum.

At the crossways turn left onto A 270 towards Elsfleth/Oldenburg

The A 270 turns into B 74 (direction Elsfleth) reaching exit Farge Ost turn right into the Eylmannstraße. On following this road it changes into Claus-von-Lübken-Str. Finally you will find us on the right side, last building.

From a northward direction:

Bundesautobahn A 27 Bremerhaven towards Bremen, exit Schwanewede.

In Schwanewede turn right at the traffic lights in the direction of "Fähre" (ferry), after about 500 m turn left in the direction of "Fähre" into Molkereiweg.

At the end of this street turn left in the direction of "Fähre".

After about 3.2 km turn left at the traffic lights into Betonstraße.

Claus-von-Lübken-Straße is on the right behind the railtracks.